



## ZAPD-900-N

### 2-way coaxial power splitter/combiner VHF & UHF 100-900MHz



The ZAPD-1-N is a DC pass power splitter or combiner suitable for UHF or all networks lower 4G/3G mobile phone or UHF STL link applications utilising the 500-1000MHz frequency range.

Coaxial cable assemblies, adaptors, antennas and other RF solutions are all available separately.

#### Order codes:

- ZAPD-900-N                      N-type female terminations
- ZAPD-900-SMA                 SMA female terminations

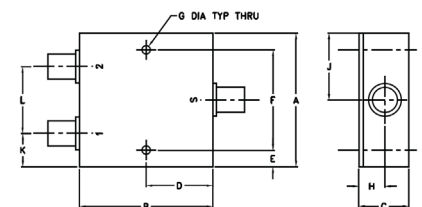


#### Electrical specifications

|                            |  |
|----------------------------|--|
| Frequency range            | 100-900MHz                                       |
| Bandwidth                  | Full frequency range                             |
| Insertion loss above 3.0dB | Typical: 0.3dB ; Max: 1.0dB                      |
| Isolation                  | Typical: 23dB ; Min: 18dB                        |
| Phase unbalance            | Max: 3° (degrees)                                |
| Amplitude unbalance        | Max: 0.3dB                                       |
| Maximum input power        | 5 Watts - as a splitter                          |
| VSWR                       | S: ≤1.15:1 - typical ; Output: ≤1.22:1 - typical |
| Impedance                  | 50 Ohms  |
| Internal dissipation       | Max: 1W  |

#### Mechanical specifications

|                       |   |
|-----------------------|---|
| Construction          | Rugged aluminium outer body and tri-metal plated terminations |
| Connector             | Output: N-type female jack<br>Input: N-type female jack       |
| Operating temperature | -55°C to +100°C   |
| Storage temperature   | -55°C to +100°C   |
| Dimensions            | Length: 50.8mm, Width: 50.8mm, Height: 19.05mm                |
| Weight                | 170grams  |
| Mounting position     | Mount utilising the 2 x 3mm holes through the body            |



#### Outline Dimensions (inch/mm)

| A     | B     | C     | D     | E     | F     | G     |
|-------|-------|-------|-------|-------|-------|-------|
| 2.00  | 2.00  | 0.75  | 1.00  | 0.25  | 1.500 | 0.125 |
| 50.80 | 50.80 | 19.05 | 25.40 | 6.35  | 38.10 | 3.18  |
| H     | J     | K     | L     | wt    |       |       |
| 0.39  | 1.00  | 0.50  | 1.00  | grams |       |       |
| 9.91  | 25.40 | 12.70 | 25.40 | 170.0 |       |       |

#### electrical schematic





## ZAPD-900-N

2-way coaxial power splitter/combiner  
VHF & UHF 100-900MHz



Typical Performance Data

| Frequency Range (MHz) | Total Loss (dB) |      | Amplitude Unbalance (dB) | Isolation (dB) | VSWR |      |      |
|-----------------------|-----------------|------|--------------------------|----------------|------|------|------|
|                       | S1              | S2   |                          |                | S    | S-1  | S-2  |
| 100                   | 3.15            | 3.14 | 0.01                     | 22.80          | 1.16 | 1.27 | 1.27 |
| 130                   | 3.14            | 3.13 | 0.01                     | 22.85          | 1.14 | 1.25 | 1.25 |
| 160                   | 3.15            | 3.14 | 0.00                     | 22.87          | 1.13 | 1.24 | 1.24 |
| 230                   | 3.17            | 3.16 | 0.01                     | 22.70          | 1.11 | 1.20 | 1.20 |
| 300                   | 3.19            | 3.18 | 0.01                     | 22.65          | 1.11 | 1.17 | 1.17 |
| 370                   | 3.21            | 3.19 | 0.02                     | 22.56          | 1.10 | 1.14 | 1.14 |
| 440                   | 3.28            | 3.25 | 0.03                     | 22.84          | 1.09 | 1.11 | 1.11 |
| 510                   | 3.30            | 3.27 | 0.03                     | 23.22          | 1.08 | 1.10 | 1.10 |
| 580                   | 3.37            | 3.34 | 0.03                     | 24.02          | 1.07 | 1.11 | 1.11 |
| 650                   | 3.41            | 3.38 | 0.04                     | 25.31          | 1.07 | 1.14 | 1.14 |
| 720                   | 3.49            | 3.44 | 0.05                     | 27.32          | 1.07 | 1.17 | 1.17 |
| 790                   | 3.56            | 3.50 | 0.05                     | 29.51          | 1.07 | 1.21 | 1.21 |
| 860                   | 3.64            | 3.57 | 0.07                     | 29.70          | 1.10 | 1.25 | 1.25 |
| 924                   | 3.74            | 3.66 | 0.09                     | 26.35          | 1.15 | 1.27 | 1.27 |

Total loss = Insertion loss + 3dB splitter loss

